



## 2024 Young Agents Leadership Institute Attendees List

### ALABAMA

**Ivie Isler, CISR, CIC, CRM**

McGriff Insurance Services  
Marketing Analyst Supervisor  
ivie.isler@mcgriff.com  
205-252-9871

**Jay Burton**

AlaCOMP  
Business Development Executive  
jay@alacompins.com  
205-335-1320

**Kingston Hall, CIC, CISR**

McGriff Insurance Services  
Marketing Account Executive  
kingston.hall@mcgriff.com  
205-552-4944

**Lura Denson**

Denson & Fuller, LLC  
Agent  
luradenson@gmail.com  
205-281-7446

### ARKANSAS

**Amy Cook**

Berkley Southwest  
AVP, Distribution Operations  
acook@berkleysw.com  
501-326-9400

**Ashley Hickman**

Cadence Insurance, A  
Gallagher Company  
Senior Commercial Marketing  
Representative  
ashley.hickman@cadenceinsurance.com  
501-831-8851

**Brandi McKinney**

Relation Insurance  
Assistant Vice President  
brandi.mckinney@relationinsurance.com  
479-925-0309

**Cash McMillen, CIC**

The Cashion Company  
Insurance & Bonding, LLC  
EVP Operations  
cashm@cashionco.com  
501-581-1176

**Justin Aday**

The River Company  
Agent  
justin.aday@rvrcompany.com  
501-253-0827

**Marena Malcom, CISR**

Berkley Management  
Protection  
Territory Manager  
mmalcom@berkleymyp.com  
870-403-7340

**Tiffany McCormick, CIC, CISR**

Echelon Benefits Group  
Senior Commercial Account  
Manager  
tmccormick@echelonig.com  
501-779-6708

**Tyler Cummings**

Anderson-Frazier  
Producer  
tcummings@afinsure.com  
501-794-7433

## FLORIDA

### **Nicole Coppock**

Frank H. Furman, Inc.  
Private Client Advisor  
ncoppock@acrisure.com  
954-849-5011

### **Taylor Hendrickson**

FAIA  
Director of Young Agents Council  
thendrickson@faia.com  
850-893-4155

## GEORGIA

### **Kayla Marie Jones**

IIAG  
Marketing Specialist  
kmjones@iiag.org  
229-221-9038

### **Miles Lee**

McGriff Insurance Services  
Producer  
miles.lee@mcgriff.com  
912-201-4699

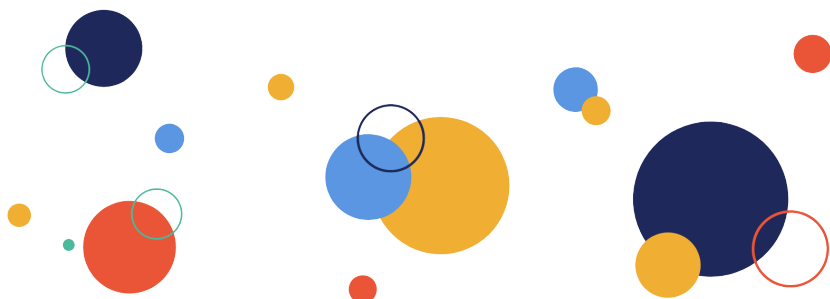
### **Steven Hall, AAI, CWCU**

Blanton & Griffin Insurance  
Risk Advisor  
shall@blantongriffin.com  
229-242-4560

## IOWA

### **Erin Dop, CPCU, AAI, AU, AINS**

Fullenkamp Insurance Agency, Inc.  
Producer  
erin@fullenkampins.com  
319-837-6178



## ILLINOIS

### **Allyson Padilla**

Blank's Insurance Agency  
Agent/Owner  
allyson@blanksinsurance.com  
618-393-2195

### **Cody Imming**

Imming Insurance Agency  
Agent  
cody@imminginsurance.com  
618-594-4536

### **Megan Kempf**

Matzenbacher Insurance Agency  
Agent  
megan.matzinsure@gmail.com  
618-475-3767

### **Natalie O'Rourke**

Shore-Murphy & Associates  
Agent  
natalie@shoremurphy.com  
217-264-1171

### **Rachel Romines**

Big I Illinois  
Director of Communications  
rromines@ilbigi.org  
217-321-3024

### **Renee Crissie**

Acrisure Midwest  
Agent  
renee@crissieins.com  
224-217-6577

## INDIANA

### **Carter Taphorn**

Arlington/Roe  
Senior Business Development  
Associate, Indiana & Illinois  
ctaphorn@arlingtonroe.com  
309-613-8042

### **Erica Held, CIC, CPCU**

Acuity  
Territory Director  
eheld@acuity.com  
317-430-8641

### **Laura Glunt**

Big I Indiana  
Director of Education  
glunt@bigi.org  
317-306-1165

### **Melissa Hall**

Big I Indiana  
Director of Communications  
hall@bigi.org  
317-228-3030

### **Zachary Norman**

Arlington/Roe  
Healthcare & Human Services  
Senior Broker  
znorman@arlingtonroe.com  
800-878-9891

## KANSAS

### **Brock Elliott**

Elliott Group, Inc.  
Producer  
brock@elliottinsurancegroup.com  
913-837-5125

### **Karlyn Judd**

AVP of Professional  
Development & Marketing  
KAIA  
karlyn@kaia.com  
785-289-9218

### **McKenzie Funston**

Smart Insurance Services  
Producer  
mckenzie@smart-ins.com  
785-263-1920

## KENTUCKY

### **Brittney Stinnett**

HUB  
Commercial Insurance Advisor  
brittney.stinnett@hubinternational.com  
270-339-1947

### **Dustin Million**

Fritts Million Insurance  
Account Executive  
dustin@frittsmillion.com  
270-307-3258

### **Katie Hines**

Big I Kentucky  
Membership Services Director  
khines@bigiky.org  
502-593-1951

## LOUISIANA

### **Maggie Landry, CISR, CIC, CPIA**

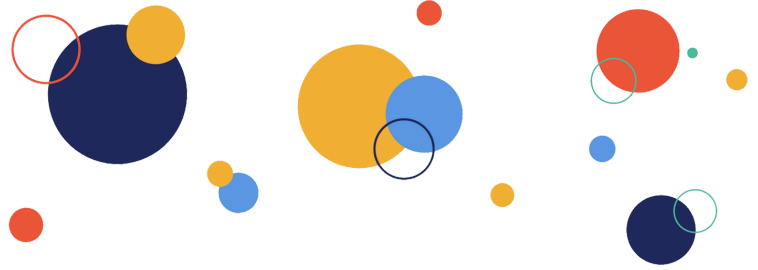
Perkins-McKenzie Insurance Agency, Inc.  
Director of Personal Lines  
mll@perkins-mckenzie.com  
225-767-0100

### **Michael Mobley**

Moore & Jenkins Ins. Agency, LLC  
Vice President  
mm@mjins.com  
985-839-4495

## MASSACHUSETTS

**Cassandra Koegel, CISR, AINS, AILP, MLIS**  
Hub International  
Middle Market Account Manager  
cassandra.koegel@hubinternational.com  
978-994-3641



## MAINE

**Carissa Chipman, CLCS**  
Chalmers Ins Group-Gorham  
Program Business Development  
Specialist  
cchipman@chalmersinsurancegroup.com  
609-221-1134

**Meesha Luce, ACSR, CPIA**  
Allen Insurance & Financial  
Account Executive  
mluce@allenif.com  
207-230-5715

**Stephanie Brown, CSR**  
Maine Insurance Agents  
Association  
Communications Manager  
stephanie@maineagent.net  
207-441-3300

## MICHIGAN

**Cecilia (Cecee) Emmons**  
Sr. Business Development Specialist  
Accident Fund Insurance  
cecilia.emmons@accidentfund.com  
317-517-4315

**Leah Robinson**  
My Member Insurance Agency  
Commercial Lines Agent  
lrobinson@mymemberinsurance.com  
989-781-2662

## MINNESOTA

**Kasia Anderson**  
Big I Minnesota  
Associate Account Executive  
kasia.anderson@bbrown.com  
612-758-8512

**Michelle Herr**  
Big I Minnesota  
COO  
mherr@bigimn.org  
763-235-6460

## MISSOURI

**Jordan Crow**  
Imperial PFS  
Sales Executive  
jordan.crow@ipfs.com  
816-400-9369

## MISSISSIPPI

### **Abbey Lea**

Ind Ins Agents of Mississippi  
Director of Communication &  
Education  
alea@msagent.org  
601-487-7219

### **Kelsey Sims, CPCU**

SouthGroup  
Agency Operations  
kelsey.sims@southgroup.net  
601-946-4400

## MONTANA

### **Ralph Giem, CIC**

Paradox Insurance Agency  
President, CEO  
dgiem@paradoxinsurance.com  
888-453-4774

## NORTH CAROLINA

### **Daniel Rohrbaugh**

Raleigh Insurance Group  
President  
daniel@raleighinsurancegroup.net  
919-744-7722

### **Jabob Cantrell**

HB Cantrell & Co.  
Producer  
jacob@hbcantrell.com  
704-650-3608

### **Kathleen (Merritt) Tongen**

The L.N. Davis Company  
Managing Partner  
mtongen@lndavis.com  
828-452-2876

## NORTH DAKOTA

### **Brent Solberg, CLCS**

Bridgemark Insurance Solutions, INC. dba  
Bain Agency  
Commercial Lines Account Executive  
brent@bainagency.com  
701-595-7773

### **Kari Lesmeister**

Haugland Insurance Services  
Agent  
kari@hauglandinsuranceservices.com  
406-350-0739

## NEBRASKA

### **Ann Ames, CAE**

Ind Ins Agents of Nebraska  
CEO  
ann.ames@biginebraska.org  
402-770-0249

### **Jacilyn Bruns**

Ind Ins Agents of Nebraska  
Communications Director  
jacilyn.bruns@biginebraska.org  
402-475-2951

### **Jared Ohl, CIC**

Dodge Partners  
Agent  
jared.ohl@dodgepartners.com  
402-938-5008

### **Jon Hongsermeier, AIP**

Adams Insurance Advisors -  
North Platte  
Producer  
jdhongsermeier@aainsures.com  
308-386-6275

### **Zachary Morken**

Adams Insurance Advisors  
Agency Development Manager  
zjmorken@aainsures.com  
402-658-8128

## NEW JERSEY

### **Cole DeAngelis**

McGowan Excess & Casualty  
Underwriter  
coledangelis@gmail.com  
848-218-3196

### **Michael Razze, Jr. CIC, CRM, MLIS**

Big I New Jersey  
President/CEO  
mrazze@biginj.org  
609-226-5968

### **Sam Leone, CRIS**

Tri-County Agency of Brick Inc.  
Producer  
sleone@tri-countryinsurance.com  
732-836-1050

## NEVADA

### **Cory Semel, CLCS**

Semel Risk Consultants  
Vice President Finance  
cory@semelriskconsultants.com  
702-809-6619

### **Tracy Donahoe, CISR**

L/P Insurance (formerly Meridian Insurance Services)  
Account Executive  
tracy.donahoe@lpins.net  
775-843-1573

## NEW YORK

### **Ashley Engl, ACSR**

Jencap  
Business Development Manager  
ashley.engl@jencapgroup.com  
716-200-9687

### **Ashley Smit, ACSR, CISR**

Borg & Borg, Inc.  
Personal Lines Underwriter  
AshleyS@borgins.com  
631-741-2828

### **Carrie Cheeks**

Jencap  
AVP, National Client  
Relationships  
carrie.cheeks@jencapgroup.com  
706-979-4404

## OHIO

### **Adam Augspurger, MBA, CIC, TRA**

Steadfast Insurance LLC  
Principal  
adam@steadfastagents.com  
614-333-8888

### **Amanda Phelan, CIC, AIA**

Phelan Insurance  
Producer  
amanda\_phelan@phelanins.com  
513-237-7738

### **Amy Amstutz**

Leland Smith Insurance Services  
Agent  
aamstutz@lelandsmith.com  
614-440-8582

### **Brandon Rapp, CIC, CPIA, CRM**

Homestead Insurance Agency, Inc.  
CEO  
b.rapp@homsteadins.com  
330-225-3100

### **Colleen Miles, CIC, CISR**

Heister Insurance  
Vice President  
colleen@heisterinsurance.com  
513-741-3244

### **Cristie Tillery, CIC**

Ohio Ins Agents Association, Inc.  
P&C Training Specialist  
cristie@ohioinsuranceagents.com  
614-552-4031

## OHIO CONTINUED

**Jeff Smith, JD, CIC, CAE**

Ohio Ins Agents Association, Inc.  
CEO  
jeff@ohioinsuranceagents.com  
614-552-3056

**Justin Buren, CPCU, CIC**

INSocial Risk Advisors  
Partner  
jburan@insocialra.com  
614-942-1226

**Kristi Sizemore**

Frost Insurance Agency  
Owner/Agent  
kristi@frostins.com  
419-966-3286

**Nick Roach, CIC**

The Wiseman Agency, Inc.  
President  
nroach@wisemanagency.com  
740-446-3643

**Rick Jackson, CLCS**

The Wiseman Agency, Inc.  
Executive Vice President  
rickj@wisemanagency.com  
740-645-7997

**Valencia Henderson**

Ohio Ins Agents Association, Inc.  
Event & Marketing Coordinator  
valencia@ohioinsuranceagents.com  
937-750-7878

## OKLAHOMA

**Avery Moore, CISR, CIC**

ECI Insurance  
Owner  
avery@eciagency.com  
405-373-2977

**Connor Myers**

Alliant Insurance Services, Inc.  
Producer, Agent  
connor@3000ig.com  
405-507-5307

**Jase Riggs, CAWC**

Riggs & Associates Group  
Owner, Account Executive  
jase@riggsinsgroup.com  
580-504-1962

**Shania Slavick**

Big I Oklahoma  
Director of Member Services  
shania.slavick@bigiok.com  
405-651-7862

**Stewart Berrong, CIC, CRM**

Ed Berrong Insurance Agency, Inc.  
Owner  
stewart@berrongins.com  
580-302-4452

## PENNSYLVANIA

**Amber Patterson, CISR, CPIA**

Liberty Insurance Agency  
Account Manager  
amberpatterson@libertyins.com  
724-989-7434

**Kate Dawson, CISR, CPIA**

Ferri Dawson Insurance Group  
Owner  
kate@fdinsurancegroup.com  
724-575-7237

## SOUTH CAROLINA

### **Bret Carter**

The Carter Insurance Group, LLC  
Commercial Lines Producer  
bret@carterinsgroup.com  
803-315-8859

### **Ernest (Jack) Griffith, CIC**

TWIA Insurance Agency -  
Summerville  
Producer  
jackg@twiainsurance.com  
843-592-1912

### **Hilary Haines, AIAM, IA-MBA**

Carrie Johnson Insurance  
Principal  
hilary@carriejohnsoninsurance.com  
843-357-9404

### **Kelly Wenzel**

Creech Roddey Watson Ins  
Office Manager  
kwenzel@crwins.com  
803-883-1596

### **Megan Huebner**

Ind Ins Agts & Brokers of South Carolina  
Vice President  
mhuebner@iiabsc.com  
803-731-9463

## SOUTH DAKOTA

### **Aubriauna Wiest**

Campbell County Insurance Agency  
Principal  
amd@valleytel.net  
605-437-2294

### **Blake Severyn**

Ind Ins Agts of South Dakota  
Communications  
bseveryn@iiasd.org  
605-222-8031

### **Felicia Ethridge**

Heartland Financial Services, Inc.  
Agent  
fethridge@hfsisd.com  
605-475-5550

## TENNESSEE

### **Jake Smith**

Insurors of Tennessee  
Director of Operations  
jsmith@insurors.org  
615-424-5982

### **Nikki Reeder, CBIA**

Boyle Insurance Agency, Inc.  
Commercial Lines CSR  
nikkir@boyle.com  
901-766-4231

### **Samantha Organek, CIC, CISR**

Griffin Insurance Agency, Inc.  
Agent  
skinney@griffinins.com  
865-376-3612

### **Whitney Breazeale Thomas**

Griffin Insurance Agency, Inc.  
Renewals & Marketing  
wbreazeale@griffinins.com  
865-376-3612



## TEXAS

**Marit Peters**

Ind Ins Agents of Texas  
Executive Director  
mpete@iiat.org  
512-993-1998

## VIRGINIA

**Moira Bocrie, CISR**

Heritage Insurance Partners  
Agent & Marketing Coordinator  
moira@trusterheritage.com  
804-332-0654

**Wilburn Absher**

Campbell Ins  
Producer  
wabsher@campbellins.com  
770-595-2554

## WISCONSIN

**Alex Kihslinger**

Robertson Ryan & Associates Inc  
VP, Producer  
akihslinger@robertsonryan.com  
262-951-6688

**Evan Leitch**

Ind Ins Agents of Wisconsin  
Director of Agency Solutions  
evan@iiaw.com  
715-821-0363

**Julia Stoneman**

Stoneman-Schopf Agency, Inc.  
Treasurer/Secretary  
jstoneman@stonemanschopf.com  
920-743-6565

# COMPANY SPONSORS

## **Benjamin Lin**

Liberty Mutual Insurance  
Manager, Agency Relations  
benjamin.lin@libertymutual.com

## **Casie Bowers**

Liberty Mutual Insurance/  
Safeco/State Auto  
VP Agency Relations  
casie.bowers@safeco.com

## **Jeffrey Jansing, CPCU, CIC**

Liberty Mutual Insurance  
Region Director  
jeffrey.jansing@libertymutual.com

## **Amanda Noorman**

Foremost Insurance  
Territory Manager  
amanda.noorman@foremost.com

## **Allyson Stieg**

Foremost Insurance  
Territory Sales Manager  
allyson.stieg@foremost.com

## **Erin Von Tungeln**

Foremost Insurance  
Territory Manager  
erin.vontungeln@foremost.com

## **Moleigh Hardy**

Foremost Insurance  
Territory Sales Manager  
moleigh.hardy@foremost.com

## **Don Henes**

Foremost Insurance  
Field Territory Manager  
don.henes@foremost.com

## **Stephen Saunders, CPCU**

Travelers  
Regional Director  
ssaunder@travelers.com

## **Doug Mohr**

Vertafore, Inc.  
Vice President, Solution Consulting  
dmohr@vertafore.com

## **Mike Erlandson, CLCS**

Vertafore, Inc.  
Vice President, VP Professional  
Services Partners  
merlandson@vertafore.com

## **Jami Young**

Progressive  
Sales Rep  
jami\_young@progressive.com

## **Mike Macfarlane**

Progressive  
Regional Sales Manager  
mike\_macfarlane@progressive.com

## **Caren Latona**

National General  
Director - Central East  
caren.latona@encompassins.com

